

Latrobe's on Royal

THE BANKING ROOM

CONTI COURTYARD



3,000 sq. ft. - 250 Reception / 160 Seated

The BANKING ROOM features hand painted murals, a twenty-one foot domed ceiling with low relief medallion and stuccoed brick archways.

BEVERAGE SERVICES ■ Diamond Bar Service-Chopin Vodka, Messaiuna Vodka, Wild Turkey Rare Breed Bourbon, Jefferson Reserve Bourbon, The Glenlivet 12 Scotch, Chivas Scotch, Glenfarclas 12 Scotch, Bombay Sapphire Gin, Citadelle Gin, Captain Morgan Private Stock Rum, Jose Cuervo 1800 Tequila, Heineken, Amstel Light, Bud, Bud Light, Frapin VS Cognac, Amaretto di Sardonna, Kahlua, Bailey's Irish Crème, Frangelico,



THE CARRIAGEWAY ON CONTI

This intimate space is uniquely decorated with antique furnishings and antique chandeliers.

THE VAULT ROOM

The unique atmosphere of THE VAULT ROOM (see floor plan) features the original vault door and barrel ceiling.

Grand Marnier, Couvassier, Chardonnay, Cabernet Sauvignon. (Includes Bloody Mary Mix)

■ **Emerald Bar Service**-Skyy Vodka, Jack Daniels Black Whiskey, Dewar's Scotch, Bacardi Rum (Light), Bombay Gin, Jose Cuervo Gold Tequila, Heineken, Amstel Light, Bud, Bud Light, Merlot, Chardonnay. (Includes Bloody Mary Mix)



1,800 sq. ft. - 150 Reception / 130 Seated

The CONTI COURTYARD features the original stone floor, gas lamp lighting and a beamed, fully enclosed roof for climate control.

■ **Sapphire Bar Service**-Taaka Vodka, Sir Malcolm Scotch, Seagram's 7 Crown Whiskey, Castillo Rum (Light), Seagram's Gin, Torado Tequila, Bud, Bud Light, Chardonnay and Merlot.

■ Beer/Wine/Soft Drinks

All bar service includes: Coca-Cola Diet & Regular, 7-up, Cranberry Juice, Grapefruit, Orange Juice, Club Soda, Tonic Water. Bottle Water, Bar Equipment, ice, bar napkins and glassware.

Latrobe's on Royal

A unique historic setting for your special event. Located on the corner of Royal and Conti Streets, in the heart of the Vieux Carré, the building is listed with the National Register of Historic Places.

Built in 1822, from a design by noted architect Benjamin Henry Latrobe, it originally housed The Louisiana State Bank, the first financial institution established in Louisiana.

Latrobe arrived in the United States from England in 1796. His designs in America reflected popular neoclassical taste, an interest in Greek forms and a familiarity with European architectural heritage. In 1803, he was summoned to Washington by Thomas Jefferson to complete the U.S. Capitol Building.

Latrobe's on Royal is a massive building that stands out as an historical architectural gem. The wrought-iron balconied, stuccoed brick exterior and interior cypress woodwork, stuccoed brick arches, vaults and dome of the first floor are but a few of its unique features.

The treatment of the first floor rooms is extremely simple. Details include a low relief medallion (original to the building) at the center vaulted dome and hand painted wall murals. The design includes a carriage house, and courtyard at the rear of the property.

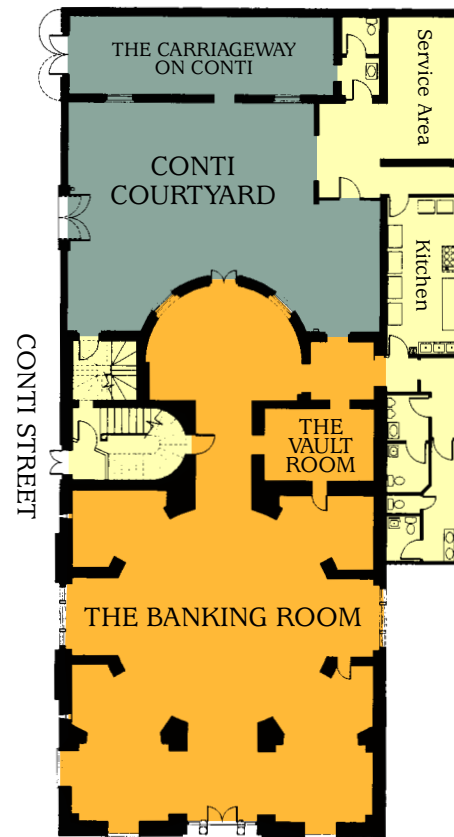
The second floor, designed as living quarters for the bank's cashier, is accessible through a private stairwell entrance on Conti Street.

This was Latrobe's final building design. He died in 1820 of Yellow Fever, a widespread disease in New Orleans in the nineteenth century.

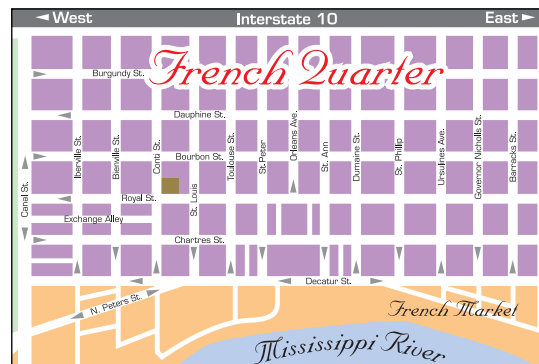
The State Bank occupied the building until 1867. Various commercial enterprises occupied the building until the early 1930's when Bernard Manheim leased it for use as an antiques gallery. A.G. Manheim acquired title to the property in the 1970's. The present owners purchased the property in November 2001.

Restoration will soon begin on the second floor cashier's quarter. The 4,900 square foot facility on the first floor is now available to make your special event truly historic.

Latrobe's on Royal



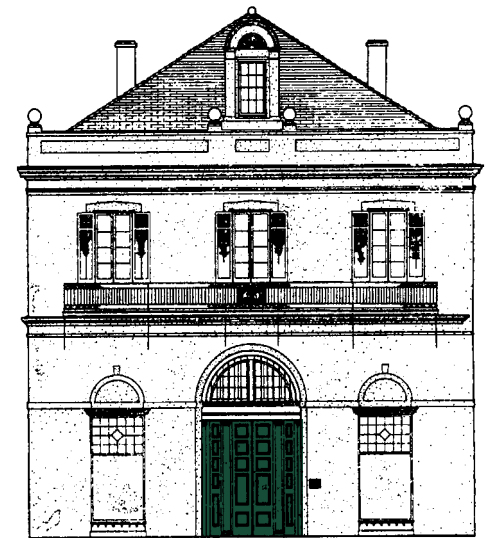
403 ROYAL STREET



Latrobe's on Royal
403 ROYAL STREET
NEW ORLEANS, LA 70130

504.299.0601 • fx 504.299.0602

latrobesonroyal@bellsouth.net



Latrobe's on Royal

403 Royal Street NEW ORLEANS